



Quality Built for Better Living



The Kimberlin

1,110 Sq. Ft, 2 Bedrooms, 2 Baths

- Convenient and Open Floorplan with Rear Sliding Door
- Laundry Centrally Located
- Second Bath Great for Guests
- Master Bedroom with Master Bath and Walk-In Closet
- 6'X14' Welcoming Front Porch

Schieler & Rassi, inc. Quality Builders



www.homewayhomes.net

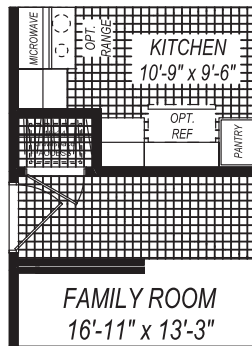
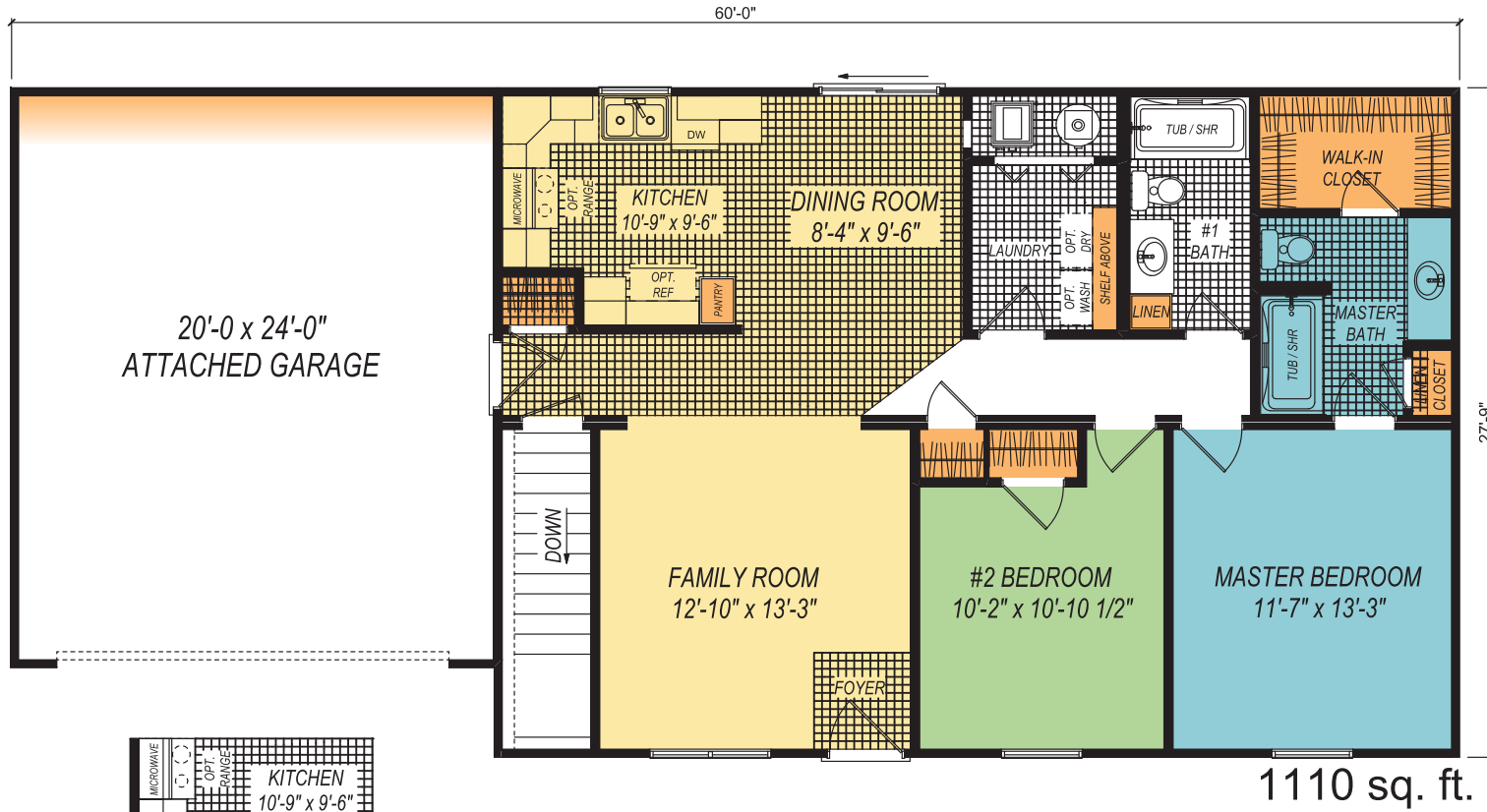


THE ESSENCE
COLLECTION

KIMBERLIN

The Kimberlin

1,110 Sq. Ft, 2 Bedrooms, 2 Baths



CRAWLSPACE OPTION



Quality Built for Better Living



THE ESSENCE
COLLECTION



NAHB
NATIONAL ASSOCIATION
OF HOME BUILDERS